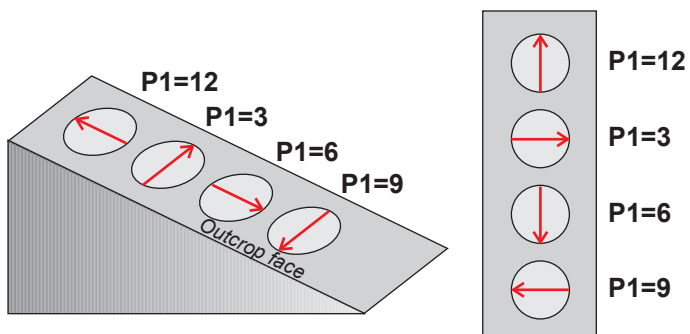


ORIENTATION PARAMETERS

Parameter P1

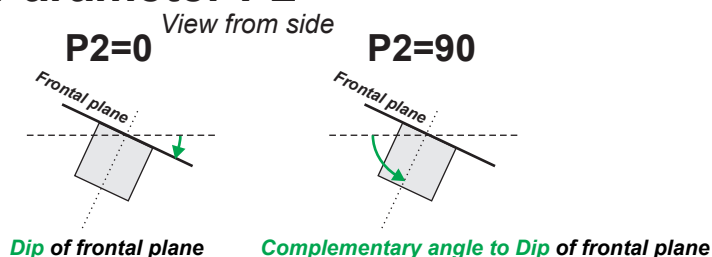


P1 is a clock value orientation of the **Arrow** which represents the x-axis of Specimen coordinate system (right hand rule, see *Legend*). The **Arrow** may be drawn:

- P1=12 Upslope
- P1=3 To the Right
- P1=6 Downslope
- P1=9 To the Left

Note that the **Azimuth** of the **Arrow** may, or may not be measured (see Parameter P3).

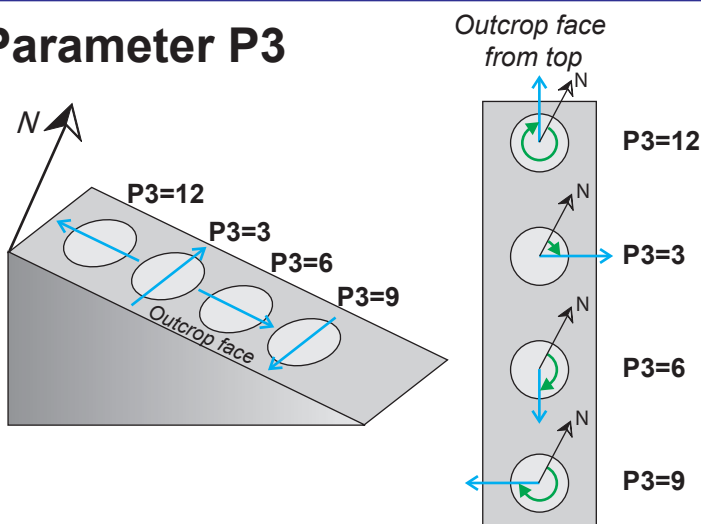
Parameter P2



P2 indicates which angle is measured as the specimen inclination.

- P2=0 **Dip** of specimen frontal plane
- P2=90 **Plunge** of specimen z-axis (Complementary angle to Dip of specimen frontal plane)

Parameter P3

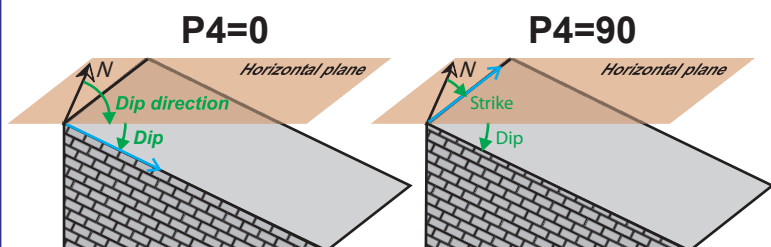


P3 is a clock value that indicates which **Direction** on the specimen frontal plane (x-y plane) is measured using geological compass and expressed as **Azimuth**.

- P3=12 Antipode of Dip direction
- P3=3 Right-handed Strike
- P3=6 Dip direction
- P3=9 Left-handed Strike

Note that the measured **Direction** may, or may not, coincide with **Arrow** (see Parameter P1).

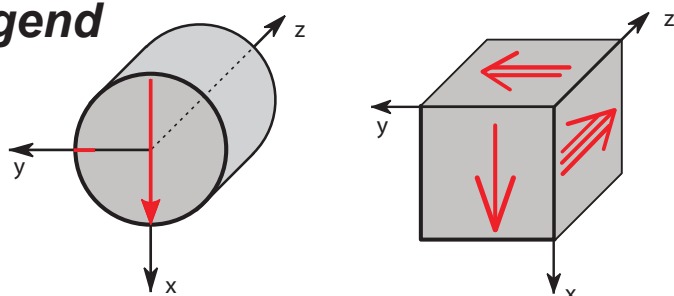
Parameter P4



P4 indicates how mesoscopic foliation adjacent to the specimen is measured.

- P4=0 **Dip direction/Dip** notation is used
- P4=90 **Strike/Dip** notation is used (right hand rule)

Legend



- Red** Markings drawn on specimen
- Blue** Measured directions (not drawn)
- Green** Orientation angles

Azimuth is measured as a clockwise angle from North and it is expressed in degrees <0-360°). Anticlockwise angles are not allowed!